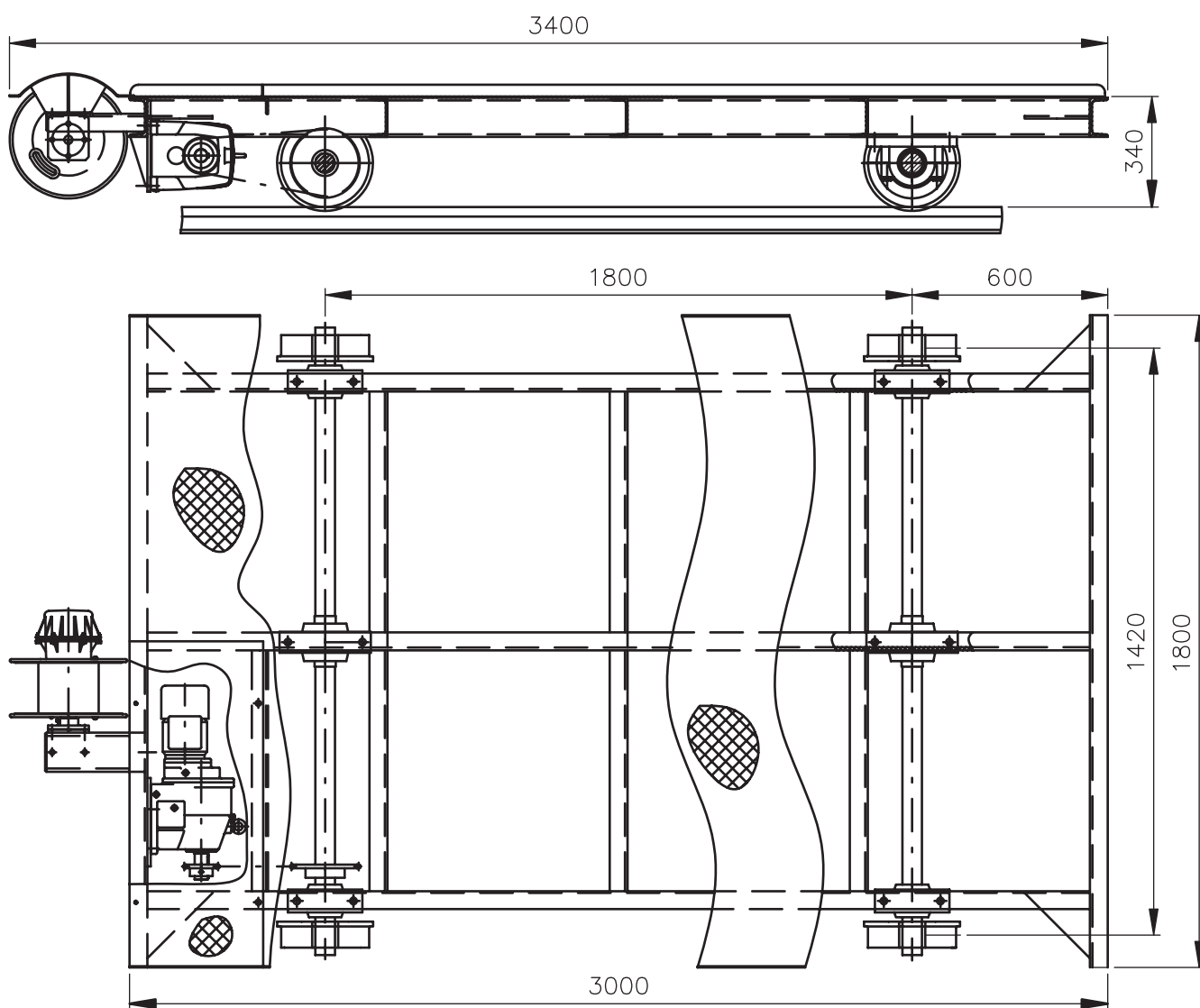




Container chassis with motor drive

KUNST PKM 1,8 x 3-10t - K



NOTE:

Loading area of this chassis can be optionally changed upon agreement and according to other container sizes.



EUROPEAN UNION
EUROPEAN REGIONAL DEVELOPMENT FUND
INVESTMENT IN YOUR FUTURE



Container chassis with motor drive

KUNST PKM 1,8 x 3-10t - K

APPLICATION

The container chassis PKM 1,8 x 3-10t is designed for loading of uniformly loaded containers and their transportation in short distances up to 35 m (with respect to power supply). It is especially used for the containers MULDEN with capacity of 5,5 or 7 m³ with gross weight up to 10 t.

FUNCTIONAL PRINCIPLE

This two-axle container chassis with its wheelbase of 1800 mm can be displaced on rails with track gauge of 1420 mm. The chassis wheel base and track gauge provide sufficient stability of the container to be displaced. For displacement the chassis is powered by an electric geared motor coupled to one axle. The electric power supply should be preferably situated outside the chassis. After disconnection the chassis can be braked by the electric motor brake. The chassis travel speed is 5 cm/sec.

MATERIAL DESIGN

The chassis frame is made of structural steel, grade 11 and protected against corrosion by hot-dip galvanizing and finish coating.

OPERATION AND MAINTENANCE

Attendance of this equipment consists only in operation of the electric motor and its routine maintenance should be done in compliance with instructions as stated in the operating manual.

DELIVERY FORM

This chassis can be delivered as a piece delivery or as a complete delivery, i.e. including electric accessories, rails, backstops etc.

DELIVERY DATE

According to contract.

R.č. PKM-K-10/10-A-en

